

MODEL 200UC

12" Capacity Hand-Fed Chipper

The Model 200UC is engineered for utility line and right-of-way contractors who demand maneuverability, cost-effective performance, and the ruggedness to chip **12" diameter material**. It's also popular with professional tree trimming services because of its efficiency and portability. The **compact design** makes the Model 200UC easy to tow and position, and its feed rate of 120 feet per minute quickly converts large quantities of brush into dimensional chips. Gasoline and diesel engine options from 74 to 84 horsepower will keep the crew busy feeding and Bandit's solid-weld construction will **provide years of dependable service**, with many 200UC's remaining on front-line service for over a decade.

200UC



RIGHT FOR RIGHT-OF-WAYS

It is without question that the creation and upkeep of transportation and utility lines is crucial for expanding and maintaining services. The Model 200UC is built as the ideal fleet machine for the task. Its combination of manageability, operating cost, and performance on processing various 12" diameter material makes it the right tool for the job when it comes to control, clearing and cleanup of the many linear passages.

FORCES AT WORK

A powerful dual-wheel feed system, mounted in Bandit's proven slide box system, provides 1,600 pounds of pulling force from each feed wheel. Thus, the 200UC effectively pulls trees and large limbs into the chipper, all while folding and crushing material with little extra trimming, repositioning, or having to cut larger pieces into shorter lengths. A sloped infeed tray gives operators less resistance for guiding branches into the chipper.

MAXIMIZE YOUR UPTIME

The most common maintenance items are easy to access on Bandit chippers, so daily maintenance is quick and simple. Bolt-in knives are easy to change through the chipper hood, and all service areas are conveniently located, including all grease points.

THE PERFECT GEOMETRY

The Model 200UC uses a chipping disc placed at a 45-degree angle to the infeed opening, making it effective at chipping small diameter logs and brush because the cutting action is more inline with the grain of the wood and incoming material. Weight is distributed on a sturdy, balanced frame that provides necessary reinforcement for chipping, meaning less vibration and stress on components, leading to longer life.



Bandit

EMPLOYEE-OWNED

6750 Millbrook Rd. • Remus, MI 49340 • 1-800-952-0178

FIND US ONLINE



WWW.BANDITCHIPPERS.COM

Hand-Fed Chippers • Stump Grinders • Whole Tree Chippers
The Beast® Horizontal Grinders • Track Carriers • Attachments

SPECIFICATIONS

MEASUREMENTS		TOWABLE
Length:	16' 6"	502.9 cm
Width:	6'	182 cm
Height:	8'	243.8 cm
Weight:	4,800 lbs.	2,177.2 kg
Engines:	74 - 84 HP (gas or diesel engine options)	
Fuel Tank:	24.5 gal.	92.7 L
Hydraulic Tank:	12 gal.	45.4 L

UNDERCARRIAGES

Towable: (1) 6,000 lb. (2,722 kg) axle with electric brakes, (2) ST225/75R 15" tires mounted on 6-bolt white modular rims, with optional upgrades available

Standard & Custom Colors Available

Choose from two standard colors, or select a custom color to match your fleet.



Bandit Yellow

Green

DIMENSIONS		
Capacity:	12"	30.5 cm
Opening:	14" high x 17" wide	35.6 cm x 43.2 cm wide
Disc:	40" dia. x 1.25" thick	102 cm dia. x 3.2 cm thick
RPM:	Approximately 1,150 RPM	
Hitch:	2-1/2" (6.35 cm) pintle hitch w/ safety chains and hooks	
Feed System:	Slide box feed system with (2) 17" (43.2 cm) adjustable down pressure springs, (2) 7-1/2" diameter x 16-3/8" wide horizontal feed wheels (19.05 cm x 41.59 cm) powered by (2) 15.9 CID hydraulic motors	
Discharge:	360° manual swivel discharge with 12" (30.5 cm) adjustable chip deflector	
Frame:	Mainframe is constructed of 3/16" x 2" x 4" rectangular tubing (0.48 x 5.1 x 10.16 cm)	



COMMITTED TO QUALITY & PRODUCTIVITY

Since 1983, Bandit has manufactured equipment for a multitude of wood waste processing markets. The vision since the beginning, is to build quality, highly productive, easy to maintain equipment providing years of dependable service.

The commitment for quality, innovation and dedication is instilled in every employee and is one of the main reasons why Bandit became an Employee-Owned Company (ESOP) in 2018. These core values ensure each Bandit machine will leave the factory ready to exceed your expectations.

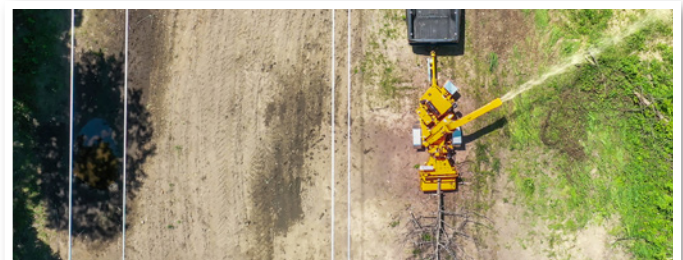


200UC

ROADWAY MAINTENANCE

MODEL 200UC FEATURES

- **Last Chance Cables (standard)**
Stops/reverses the feed wheel when pulled in case of an emergency
- **Operator Safety Control Bar (standard)**
Wraps around 3 sides of the infeed chute & controls the direction of feed wheels
- **Wood Pusher Paddle (standard)**
Used to feed small wood debris into the chipper
- **Chipper Hood Pin w/Padlock (standard)**
Prevents unauthorized access to the disc or drum
- **Chipper Hood Engine Disable Plug (standard)**
Prevents engine from being started without the hood pin in place
- **Hydraulic Bottom Bump Bar (option)**
Stops feed wheels via mechanical connection when bumped, diverting hydraulic power away from the feed wheels



RIGHT-OF-WAY CLEARANCE

Bandit Offers a Complete Line of Tree Care Equipment:
Hand-Fed Chippers • Stump Grinders • Whole Tree Chippers
The Beast® Horizontal Grinders • Track Carriers • Attachments